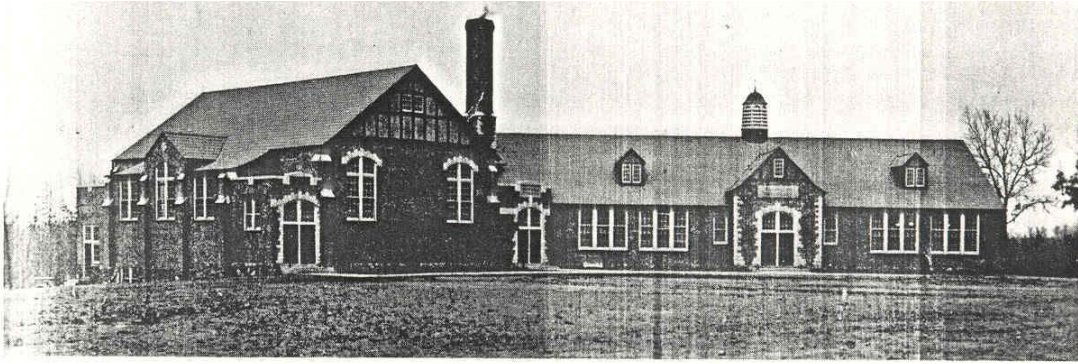


Preface

The Pilot was the first school year book at School of the Osage. The only copy of 'The Pilot' available to me was badly worn and pages loose. However, in an effort to give a hint of the information within The Pilot, the following is a written reproduction of the pages found within the school's year book.

The first page of school's year book described the school, listed school board members, and school subjects.

This reproduction of the Pilot was provided by Donna Shockley Carrender, January 2011.



The School of the Osage

The School of the Osage was erected in the year of 1933-'34, being one of the first P. W. A. projects of its kind. The building was planned by the very able architects, Bonsack and Pierce and was constructed by the Epple Construction Co. It is located on the banks of the Lake of the Ozark, in the center of the Consolidated District Number 1—the first consolidated district in Miller county.

The building of this High School was made possible through the construction of the Bagnell Hydro-Electric Dam and through the very willing cooperation of the citizens of the Consolidated District.

This district was organized during the construction of the dam—its organization being necessary in order to take care of pupils who came here while the dam was being constructed. At that time the High School was located in Bagnell, and the district was made up of two small schools. It now includes six rural districts, and the Bagnell Schools. It includes Junior and Senior High.

This building is a very new and modern first class High School. It has modern equipment, library and auditorium. The subjects offered are: American History, Glee Club, Physiology and Hygiene, Health, World History, H. S. Geography, Music, Home Economics, Mathematics, Book-keeping, Commercial Law, Business English, Typing, and Manual Training.

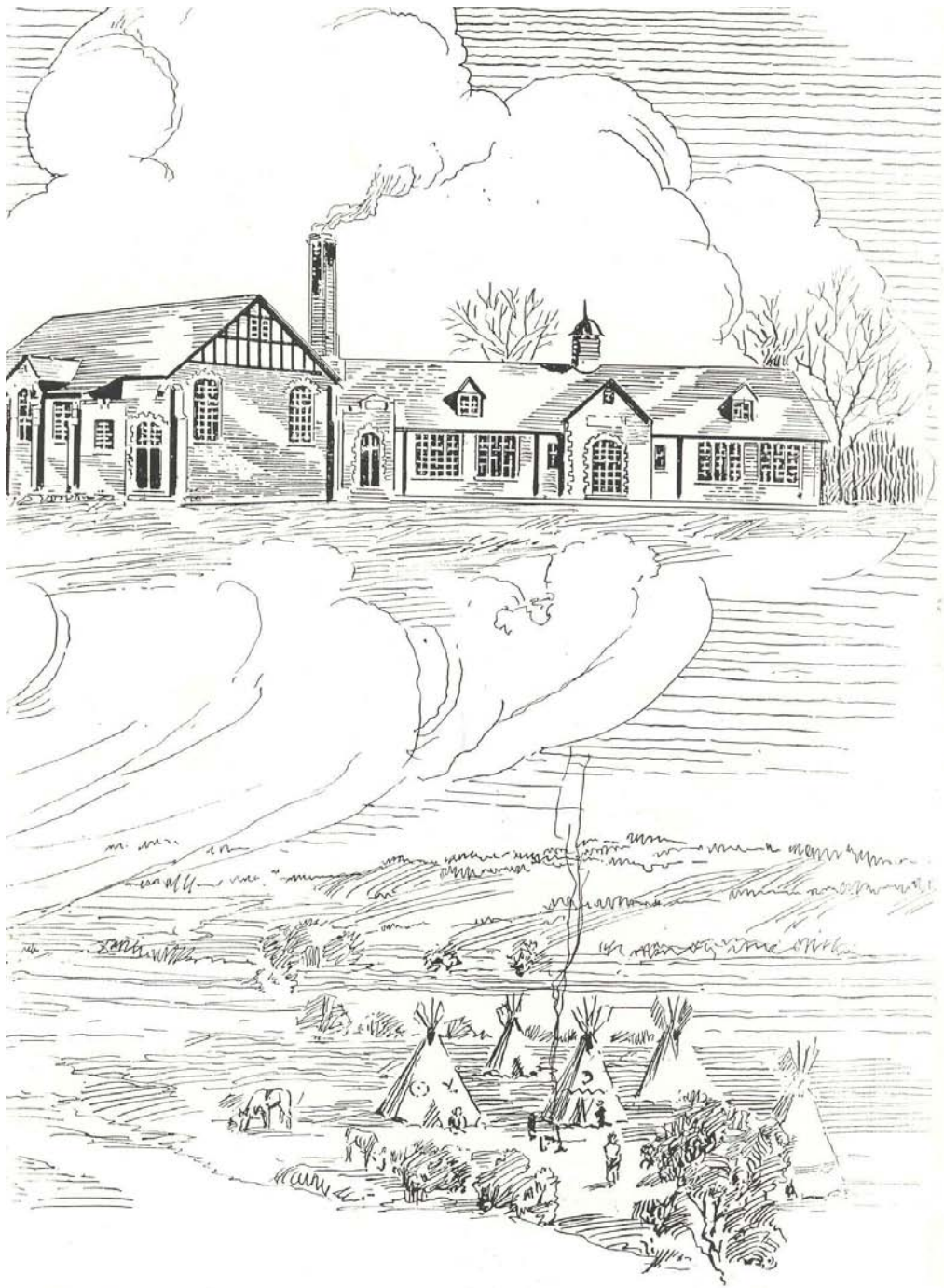
The members of the Board of Education during the construction of this building were: W. S. Frame, President; Mrs. Turner White, Secretary and Treasurer; M. W. Finley, C. H. Parish, Bert Robinson and C. L. Diedrick were the directors. The building was completed in time for the Commencement Exercise of the Senior Class, 1934.

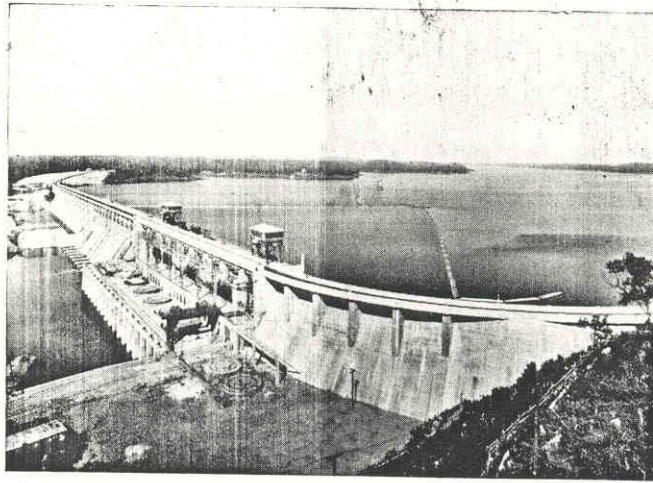
The present Board of Education are: W. S. Frame, President; Mrs. Turner White, C. L. Diedrick, Moreland Brown, R. Davis, C. M. Payne and Raleigh Degraffenreid.

The high-school faculty are: D. C. Hickman, Superintendent; Burl Henderson, Principal and Coach; L. D. Goodrich, Principal of Junior High; Olive Abbott, Grace Owen and Margaret Anderson. The 1934 and '35 Class are the first students to graduate in the new building.



"THE OSAGE PILOT"
published by
THE SENIOR CLASS
of the
"SCHOOL OF THE OSAGE"
VOLUME I
1935

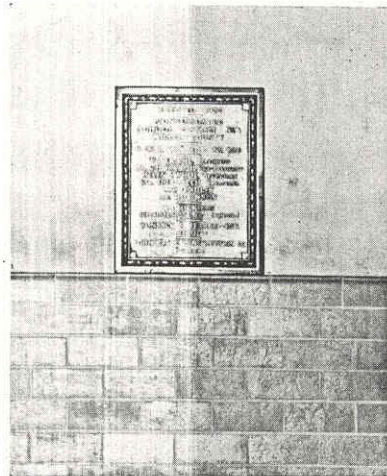




The Bagnell Dam

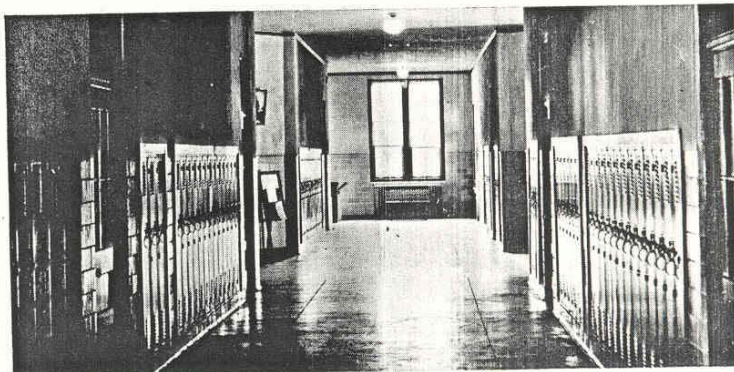
Foreword

We, the Annual Staff of "The Osage Pilot" present to you a reminiscence of the first year of the School of the Osage.



Dedication

We respectively dedicate this first High School publication to the administrative board, patrons and the Union Electric projects, architects, and constructors, for out of their planning and work has come our wonderful building and the school we now enjoy.



Contents

ADMINISTRATION AND CLASSES

ORGANIZATIONS

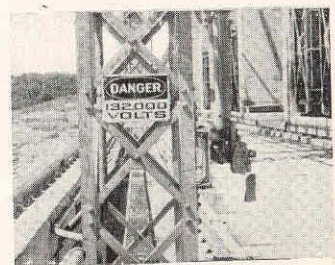
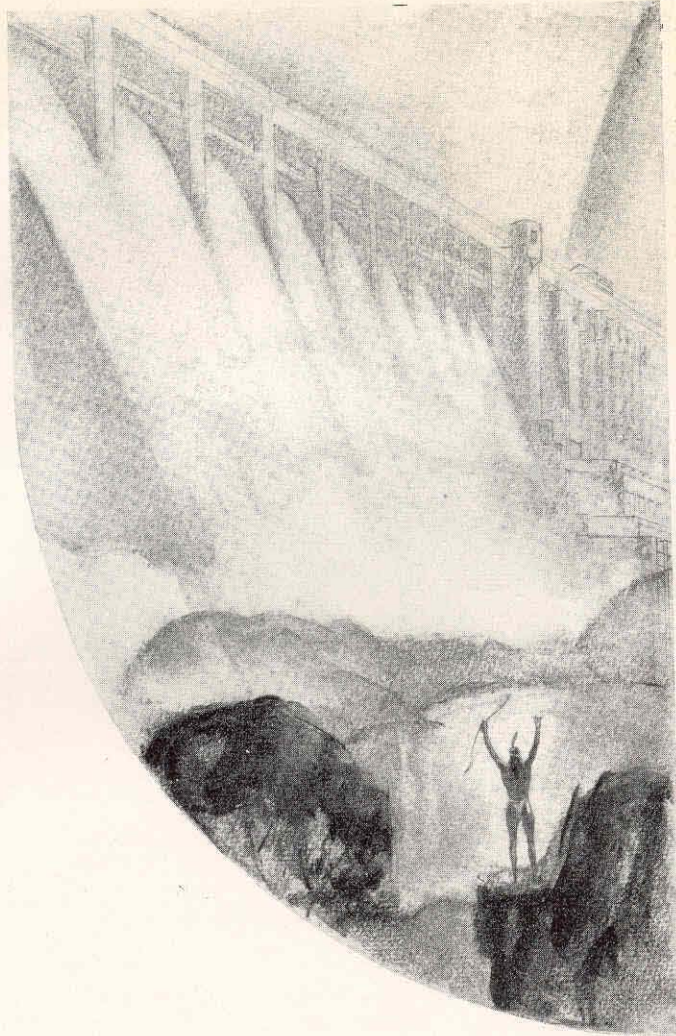
ATHLETICS

FEATURES



Adminstration

and Classes





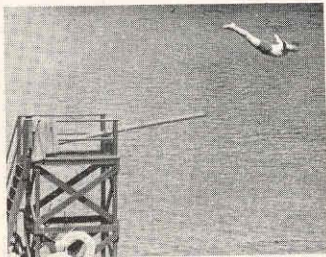
MR. D. C. HICKMAN

Superintendent's Message

It is my hope and desire that every student enrolled in School of the Osage will successfully complete their program and take their place in society to become worthwhile members ever seeking new ideas to broaden their horizon, to inspire leadership and to render more efficient service in society.

It has been our aim to so teach, direct, and guide the youth of our community that they will be better able to cope with life's situations and to develop a more wholesomely integrated personality in each and every individual.

It has been a pleasure to have had no small part in the planning of this new school which countless number of boys and girls do and will continually have every opportunity to better themselves under guidance of trained instructors and best of environmental conditions. The opportunity is yours—do not fail to take advantage of the chance, which your parents and community have so liberally placed at your disposal.



May every success crown your best efforts.

Signed

D. C. HICKMAN,
Superintendent

Faculty Personnel

Mr. D. C. Hickman has been Superintendent of Schools in this district for two years. They have been years of unusual growth and progress in terms of expansion of area and valuation of the district, increased enrollment, modern transportation of pupils, and a broad, sound educational policy, including an approved curriculum and a wholesome, balanced program of extra-curricular activities. P. T. A. groups and public entertainments in the form of school plays and athletic games have done much to integrate and unify the district. This set-up is largely the result of the energy, foresight and leadership of the superintendent.

But Mr. Hickman is not content to administer and supervise. Besides teaching his classes in speech and high school geography, he has coached plays, organized and coached a debate team that defeated Jefferson City and added a trophy or two to our collection, and has coached a winning team in girls' basket ball.

Builder, teacher, neighbor, friend—Mr. Hickman will be difficult to replace.

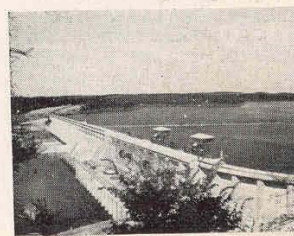
Meet the Principal and coach, Mr. Burl Henderson. Alert, friendly, dignified and efficient, Mr. Henderson has done two years of excellent work in classroom, laboratory and gym. He has also sponsored the Hi-Y Club. Chief in the long row of silver trophies, stands the token of our victory over the invincible Eldon basketball team, when coach and players won the undying gratitude and admiration of all good Osage Indians.

Miss Margaret Anderson, senior member of the faculty, has taught in this high school for four years. First in the system, first in the pep-squad, and first-rate friend to every student that behaves himself. As sponsor of the Girls' Booster Club and teacher of mathematics and home economics, Miss Anderson has done thorough, efficient work. She is the type of teacher that lends dignity and stability to any school system.

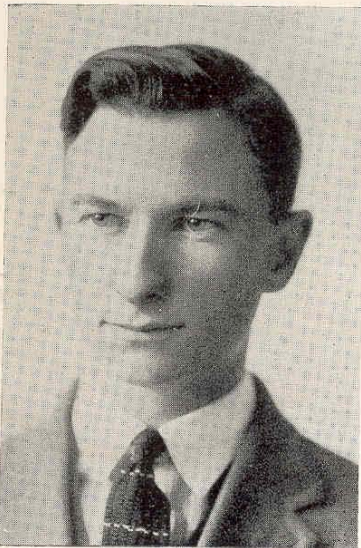
As head of the English department, Miss Olive Abbott has striven earnestly to instill in the hearts and minds of her pupils a love of the literary treasures of the past and to teach them to speak with accuracy and refinement. Quiet and industrious, Miss Abbott has helped the school in many ways. She has sponsored Girl Scouts, assisted in the coaching of plays and has had charge of the doors at our school games and entertainments. She recently gave the school and community a treat in the play "Apple Blossom Time."

A strong commercial department and a year of valuable training in musical appreciation and expression are contributions of Miss Grace Owen to the School of the Osage. A Boys' and Girls' Glee Club and the operetta "Twilight Alley" represent only a part of the enjoyment and inspiration that have come to the school through Miss Owen's efforts. She has also made contribution of her own talent—a lovely voice—to school entertainments and has played the piano for all school functions.

The Librarian, Mr. Louis D. Goodrich, teaches social studies and has charge of pupil personnel. He has cataloged the one thousand volumes in the library in the Dewey and Cutter systems, set up a charging system and card index with the aid of the typewriting class, and introduced an original method of binding periodicals. He has also gathered data for a modern pupil-personnel record system. Besides these things, Mr. Goodrich has organized Boy Scouts of which organization he is scoutmaster performing a service worthwhile to the youth of this community—a real teacher and community worker.



Administration



W. S. FRAME,
President 1935



B. C. ROBINSON
President 1934

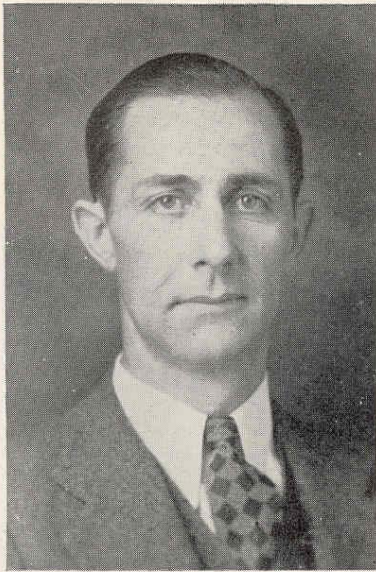


D. C. HICKMAN
Superintendent
B. S. Kirksville, Missouri
M. A. University of
Missouri
Speech and S. Social Studies

SCHOOL BOARD 1935-36
W. S. FRAME, *President*
C. L. DIEDRIECH, *Secretary*
MRS. TURNER WHITE
MORLAND BROWN
R. DAVIS
C. M. PAYNE

SCHOOL BOARD 1934-35
B. C. ROBINSON, *President*
MRS. TURNER WHITE
C. A. JORDAN
V. RED MOORE
W. S. FRAME
C. L. DIEDRIECH, *Secretary*
G. R. DEGRAFFENREID

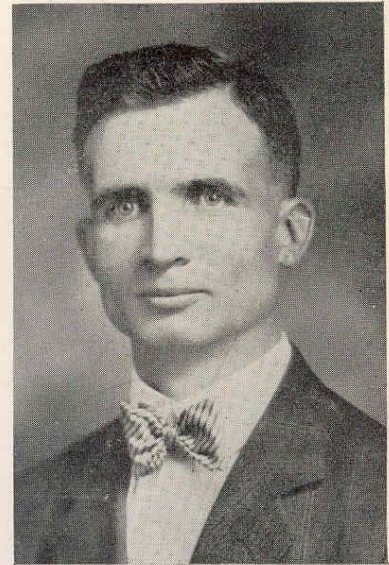
Faculty



BURL HENDERSON, *Principal*
B. S. in Education, Springfield
Graduate work, Northwestern University
Agriculture, Science, Soc. Studies



MARGARET ANDERSON
B. S. Springfield
Mathematics



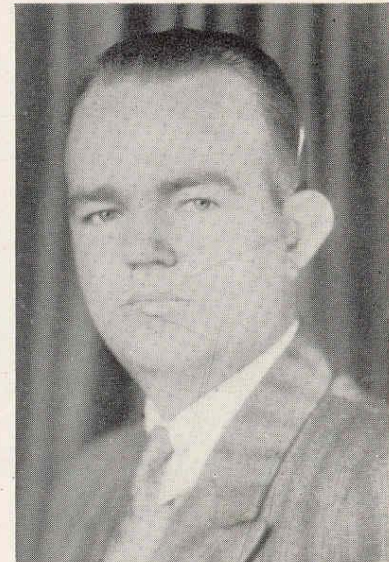
LOUIS D. GOODRICH
A. B. Park College
M. A. University of Missouri
Sociology, Science, Mathematics



GRACE OWEN
B. S. in Education, Warrensburg
Commerce and Music



OLIVE ABBOTT
B. S. in Education, Central Missouri
State T. C.
Social Science and English



PAUL R. OUSLEY
B. S. in Education, Warrensburg
M. A. University of Missouri
Adult Education

Senior Class History

As we travel down the path of life, we like to look back over the previous years and remember the things we have done and let our minds roam over that well trodden path which we know so well. There are memories that are dear to every heart which we can never forget. Our memories are so important, that we feel we should impart to you their greatness, that you may lift your voice in gladness at our memory and know the sorrow that we feel in leaving the scenes of our happy times.

As Freshmen, we were a group of happy students looking forward to the unknown happenings that were going to make up our high school life.

The class consisted of the following students: Audra Howser, Bruce Boyer, Harl Morris, Sherman Robinett, Marge Prince, Mattie Calhoun, Lloyd Kidwell, Tony Stith, Don Mosely, Lena Brown, Faye Brown, Norman Strange, Curtiss Strange, Zella Cotten, Gerald Conner, Burdette Conner, Erma Knoch, and Edna Kirk.

In our first mile of the race we were located at Bagnell with Mr. Joe C. Stites as Superintendent, and Mrs. Joe C. Stites, Principal. We chose Miss Marguerite Anderson as our sponsor. To make our High School history more worthwhile, we made the wise choice of electing Norman Strange president of the class. He had as his helpers Audra Howser and Zella Cotten.

On the last day of school each Freshman was rewarded a card. These cards showed exceptionally good records, emphasizing that we were getting the best out of our school work.

Along the second mile of our race we began to travel faster, although Harl Morris, Russell Morgan, Sherman Robinett, Marge Prince, Lloyd Kidwell, Tony Stith and Don Mosely were absent. Bonnie Workman was added to the class. We chose as our president, Audra Howser; vice president, Bruce Boyer; and class sponsor, Miss Anderson. We left the school at the end of the term very happy at the thought that we were steadily climbing the ladder to success and would be Juniors the next year.

In our Junior year, Mr. D. C. Hickman became our Superintendent, Mr. Burl Henderson, Coach and Principal, Mrs. Beatrice Mowery, class sponsor, assisted by Miss Anderson.

Mattie Calhoun, Zella Cotten and Lena Brown failed to return. Billie Atteberry became a new member of the class.

Now, our last year, we have moved into a new school building located at Lake Ozark. Miss Grace Owen and Miss Olive Abbott were added to the guidance staff. The class elected Norman Strange as president, Thomas Parsons, vice president and class representative; Audra Howser as secretary and treasurer, and Mr. Hickman, class sponsor. Thomas Parsons, Nellie Jeffries, Olive Jeffries, Leonard Hanks, Raymond Graham and Jean Evans were added to the graduating class.

Billy Atteberry is President of the Student Council. Tommy Parsons is class representative, Audra Howser, secretary, and Olive Jeffries is treasurer of the council and school. This council is composed of the above members and a representative from each class. They are advisers of the student body, elects pep-leaders, and helps to retain discipline and order in the corridors and on the school grounds. Basketball and track are made up mostly of the senior boys. The girls' team has four players from the senior class. This class has sponsored the Osage Pilot, the first annual to be published by this school.

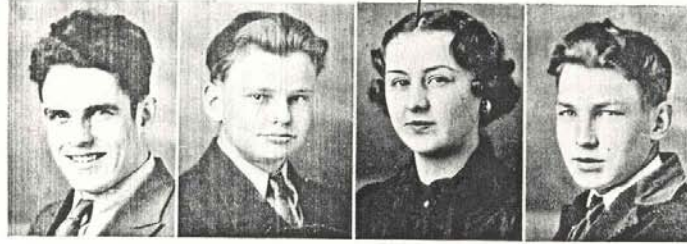
Four seniors, including captain, helps to make up the Debate Club. The seniors have been the sponsors and officials of many activities held at this school.

Being the first class to graduate from the School of the Osage, we hope to have left a well trodden path which will be an example to other graduating classes to come. May the work of these graduates be long remembered in the history of Osage High.



Age Ten

Senior Class Officers



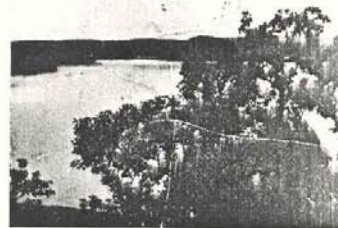
NORMAN STRANGE
President
Club Hi-Y '35
Basketball '32, '33,
'34, '35.
Track '33, '34, '35.
President of Hi-Y '35

TOMMY PARSON
Vice President
Debate '35
Clubs Hi-Y
Glee Club

AUDRA HOWSER
Secretary
Glee Club '34, '35
Clubs, Girl's Reserve
'34, '35.
F. G. C. Club '35.
President of Girls'
Reserve Club
Secy. Student Coun-
cil '35

BRUCE BOYER
Treasurer
Basketball '33, '34,
'35.
Track
Club Hi-Y, Glee Club
Debate '34, '35

MOTTO: Work, not worry, brings success.
FLOWER: American Red Rose
COLOR: Red and White



SENIORS

NELLIE JEFFRIES

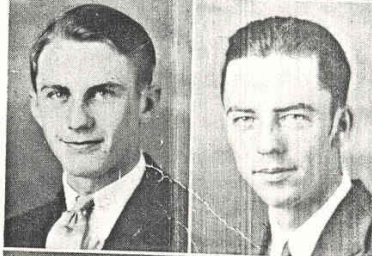
Clubs—Girl's Reserve '35;
F. G. C. Club, '35; Glee
Club; Chaplain Girl's Re-
serve, '35.



LEONARD HANKS
Club-Hi-Y '35.

BILLY ATTEBERRY

Basketball '34, '35; Track;
Club Hi-Y; Glee Club; Pres-
ident Student Council; Sec-
retary Student Council '34.



GERALD CONNER
Basketball '34, '35; Club-
Hi-Y; Track '34, '35.

RAYMOND GRAHAM
Club Hi-Y '35.



OLIVE JEFFRIES
Treasurer of School '35;
Clubs: Girl's Reserve '35.

SENIORS

FAYE BROWN

Basketball '34, '35; Clubs-Girl's Reserve '34, '35; F. G. C. Club '35.



BURDETTE CONNER

Basketball '34, '35; Club-Hi-Y; Secretary Hi-Y '35.

BONNIE WORKMAN

Clubs-Girl's Reserve; Glee Club.



JEAN EVANS

Debate '35; Basketball '35; Clubs-Girl's Reserve '35; F. G. C. Club '35.

CURTIS STRANGE

Glee Club '34, '35; Basketball '35; Debate '35.



ERMA KNOCH

Basketball '34, '35; Clubs

History of the Juniors

In September, nineteen hundred and thirty-one, eleven passengers started out to sea on the ship of "learning". The group consisted of Jannie Howser, Freda Quinn, Doris Boots, Doris Knoch, Marie Lewis, Gertrude Boots, Flossie Strange, Sylvia Henry, Emily Mills, Bunion Mosley, and Lawrence Quinn. The officers were, Superintendent Joe C. Stites, First Mate, Principal; Mrs. Joe C. Stites, Second Mate; Pilot Miss Anderson.

During the first voyage we encountered many storms, such as getting into the wrong rooms, and being late. We survived the initiation and took an active part in clubs, music and athletics. Toward the close of the year we anchored at Spring Time and enjoyed a class party.

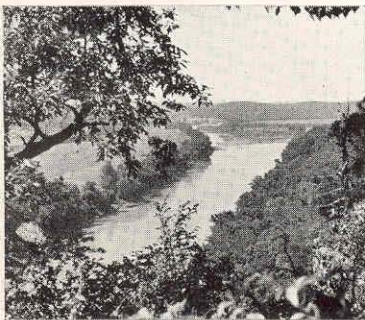
The following year, as Sophomores, four of our passengers failed to return, namely: Jannie Howser, Marie Lewis, Gertrude Boots, and Bunion Mosley. While we lost four, we gained two new passengers, Marjorie Burd and Johnny McGown. The pilot was D. C. Hickman, assisted by Mr. Burl Henderson, Mrs. Mowry and Miss Marguerite Anderson.

This is our Junior year, and all the passengers are back, with the addition of four new members. They are Mrs. Keeney, Clay Emery, Dorothy Warner, and Alvin Miner. Even though our class is the smallest in school, we are striving to make it the best with our same captain, D. C. Hickman, assisted by Mr. Burl Henderson, Miss Grace Owen, Miss Olive Abbott, Mr. Louis D. Goodrich and Miss Marguerite Anderson.

The Juniors have helped in many respects to make the school year a success. There were five Juniors on the basketball team, Doris Boots, Doris Knoch, Flossie Strange, Marjorie Burd, and Sylvia Henry. Dorothy Warner won second in an oration contest, was a member of the debate team, was in the one-act play and President of Girl Reserves. Sylvia Henry was Vice President of Girl Reserves. Alvin won third place in a baritone solo at California. Every Junior participated in the Junior play. Flossie Strange was President of the Junior class last semester and Dorothy Warner, first semester. Dorothy Warner was President of F. G. C. and Marjorie Burd, secretary.

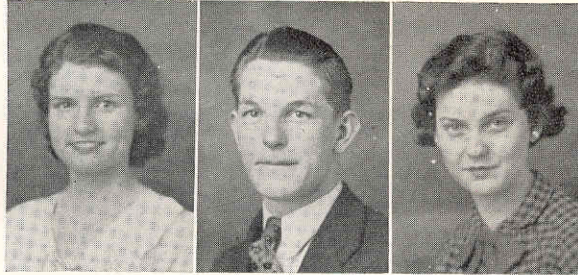
The Junior class published the Osage Mirror, a semi-monthly school paper, sponsored by Miss Abbott. Flossie Strange is the editor.

The scholastic average of the Junior class is a strong M plus.



Page Fourteen

Junior Class Officers

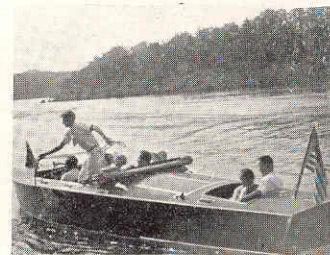


FLOSSIE STRANGE
President

ALVIN MINER
Vice President

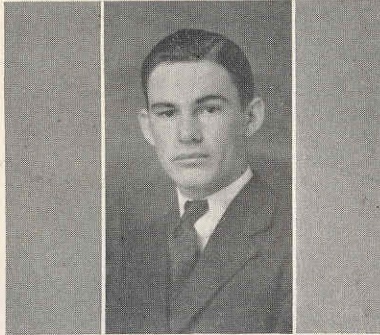
EMILY MILLS
Secretary and Treasurer

MOTTO: Ever Seeking Knowledge.
FLOWER: Lilac.
COLOR: Lavender and White.



JUNIORS

LAWRENCE QUINN



DOROTHY WARNER



SYLVIA HENRY



MARJORIE BURD



CLAY EMRY



DORIS BOOTS



DORIS KNOCH



SOPHOMORES



Back Row—Shirley Barron, Fern Howser, Jessie Lee Ballenger, Lucille Jones, Mildred Graham, Kieth Knoch.
Second Row—Maggie Kidwell, Danny Dismang, Max Caldwell, Opal Parsons, Kenneth Miller, Miss Anderson, Sponsor.
Front Row—Anita Heckerman, Belle Kidwell, Doral Emry, Juanita Andrews, Pearl Williams, Berneice Thompson.

HISTORY OF SOPHOMORES

In September, 1933, the Freshman Class consisting of Danny Dismang, Shirley Narron, Keith Knoch, Kennet Miller, Lucille Jones, Belle Kidwell, Rosie Williams, Pearl Williams, Jack Atteberry, LaVerne Burch, Maggie Kidwell, Geraldine Payne, Jeanne Huckabay, Ruel Calkin, Robert Long, Jessie Lee Ballenger, Jaunita Andrews, Alvia Johnson, Bernice Thompson, Clara Clark, Leah Hawken, Russel DeGraffenreid, Lloyd Huckabay, Max Caldwell, and Fern Howser started its great career and was led through a successful year by its president, Jeanne Huckabay.

This class was guided by Mr. D. C. Hickman, Superintendent, Principal, Miss Marguerite Anderson, Mrs. Mowery, and Mr. Louis D. Goodrich.

This year with the absence of Rosie Williams, LaVerne Burch, Jeanne Huckabay, Robert Long, Alvia Johnson, Clara Clark, Leah Hawken, Russel DeGraffenreid, Lloyd Huckabay, and Jackie Atteberry, and having succeeded in gaining one new pupil, Doral Emry, the Sophomore class is arriving near the competition of their second year in High School and have begun to enjoy High School life to its greatest extent. The Sophomore year in High School is indeed, the most enjoyable of the four years and students from this group participates in almost every activity, and builds up a foundation for the last two years. Basketball, Glee Club, and many other phases of student leadership, have depended more than ever on Sophomores material.

Max Caldwell is president of the class, basketball player and representative of his class. Other sophomore boys that plays basketball are Danny Dismang, Keith Knoch, Shirley Barron.

Fern Howser, Doral Emry, Geraldine Payne and Maggie Kidwell plays on the girls' team.

Fern Howser represented the School of the Osage by attending the meeting at Jefferson City, Missouri, which was given by the American Citizenship Committee of State Federation of Women's Club.

Junior High



Back Row—Noel Calkins, Francis Mills, Vernon Otten, Gilbert Shrauger, Chas. Wessels, Leonard Starks, David "Gabbie" Ratliff, Gerald Robinson, Warren Conner.

Fourth Row—Jeane Williams, Edith Robinson, Lily Mae Van Hooser, Wayne Percival, Eulah Allen, Mary Hawken, Lawrence "Windy" Cartwright, Herbert Heckermen, Mrs. Pabor, Butcher, Mr. Goodrich, Principal.

Third Row—Mr. Hickman, Superintendent, Elmo White, Beadrick Stevens, Ruth Beard, Mary Jane Pabor, Marie Russell, Hazel Pope, Tressie Tannehill, Ila Payne, Jackie Atteberry, Clarence Graham, Russell "Fatso" Shrauger.

Second Row Seated—Frank Israelson, Josie Busch, Lena Boots, Doris Shrauger, Francis Briggs, Betty Jo Atteberry, Olis Giles, Doris Nelson, Leatrice Holden, Blanche Beard, Glen Gier, J. L. Howser.

First Row—Robert "Bing" Miller, Howard Howser, Henry Parsons, Tennyson DeGraffenreid, Herbert Robinson, John Riley DeGraffenreid, James Butcher, Donald Boyer, Jule Tannehill, Lawrence Latta.

Not in the Picture—Norman Henry, Farris Jeffries.





The STUDENT gets the annual
The SCHOOL gets the fame
The PRINTER gets the money
The STAFF gets the blame.

At the first of this school year our staff was organized. As none of the students had had any experience in the work of building an annual, we left the choosing of the staff to Mr. Hickman, our sponsor. He made the wise choice of Audra Howser as Editor, and Billie Atteberry as Business Manager.

We worked very hard in securing the material with which to build the annual. We made many different trips to different places to secure advertisements and had plays and different activities to raise money for the production of the annual.

We have studied different methods of building annuals, and have really done our very best and put forth every effort in the attempt to make this annual one which will recall to mind all the good times we have all had together in this school. We hope that everyone who has one of these annuals, will feel well repaid, and we hope that the publication of a school annual will become a yearly event with the Senior Classes to come.

- Audra Howser—*Editor*
- Billy Atteberry—*Business Manager*
- Thomas Parsons—*Assistant Manager*
- Olive Jeffries—*Class Editor*
- Burdett Conner—*Assistant Editor*
- Norman Strange—*Athletic Editor*
- Bonnie Workman—*Artist Editor*
- Faye Brown—*Humor Editor*
- Bruce Boyer—*Organization Manager*
- Nellie Jeffries—*Photographer*
- Theora Robinson—*Post Graduate Editor*
- Erma Knoch—*Circulation Manager*



Music Department

The music department was organized in the fall of 1933, under the sponsorship of the English and Music instructor, Mrs. Beatrice Mowry.

Boys and girls glee clubs were organized in both the Junior and Senior high school, also an orchestra of fourteen members. These groups furnished the music for the plays, Baccalaureate and commencement during the year.

The fall of 1934 the same groups in Junior and Senior high school were re-organized. The glee clubs' first appearance of the season was on the program for the dedication of our new building.

The Junior high school boys and girls glee clubs presented the operetta "Twilight Alley."

Music for the various functions of the year was furnished by the music department.

The words of the school song adopted this year were written by Mr. L. D. Goodrich, and set to the music "Farewell to Thee."

SCHOOL OF THE OSAGE

There's a school whose praise we love to sing
As to it's shrine we tribute bring
Where fondest mem'ries ever cling
School of Osage, dear old school we love so well .

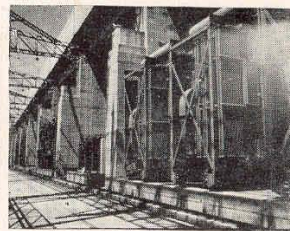
Chorus:

All hail to thee, All hail to thee,
Dear school, our students ever will adore thee,
And to the end, thine honor we'll defend
With labor, love and loyalty.

When fortune smiles upon our way,
Or dreary drags the dismal day
Thee we'll praise in all our work and play,
School of Osage, dear old school we love so well .

Chorus:

MISS OWEN, *Director*





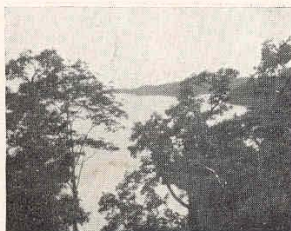
GIRL'S GLEE CLUB

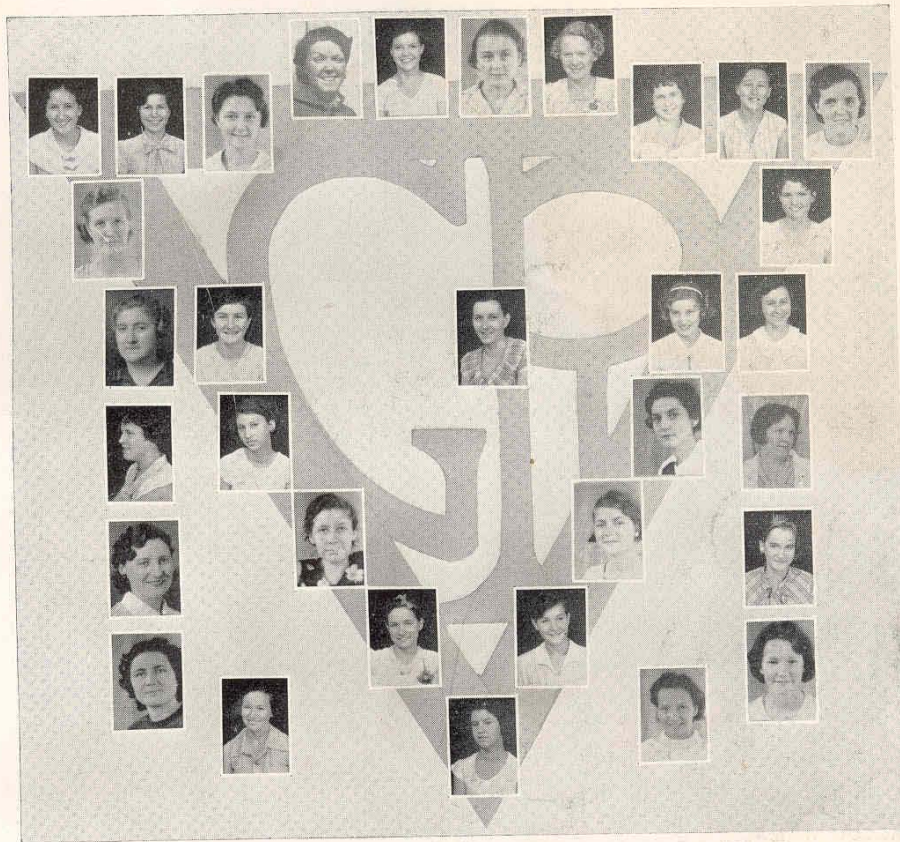
Nellie Jeffries, Mrs. Pabor, Anita Heckerman, Maggie Kidwell, Geraldine Payne, Eulah Allen, Bonnie Workman, Flossie Strange, Dorothy Warner, Emily Mills, Fern Howser, Audra Howser, Mrs. Butcher, Theora Robinson, Sylvia Henry, Doral Emry, Juanita Andrews.

BOY'S GLEE CLUB

Standing—Alvin Miner, Curtis Strange, Max Caldwell.

Seated—Miss Owen, director; Bruce Boyer, Clay Emry, Jackie Atteberry, Leonard Stark, Kieth Knoch, Shirley Barron, Gilbert Shrauger, Billy Atteberry.



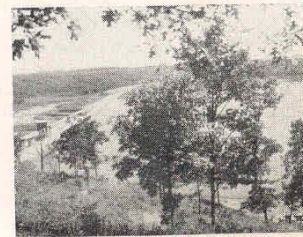


Girl's Reserve

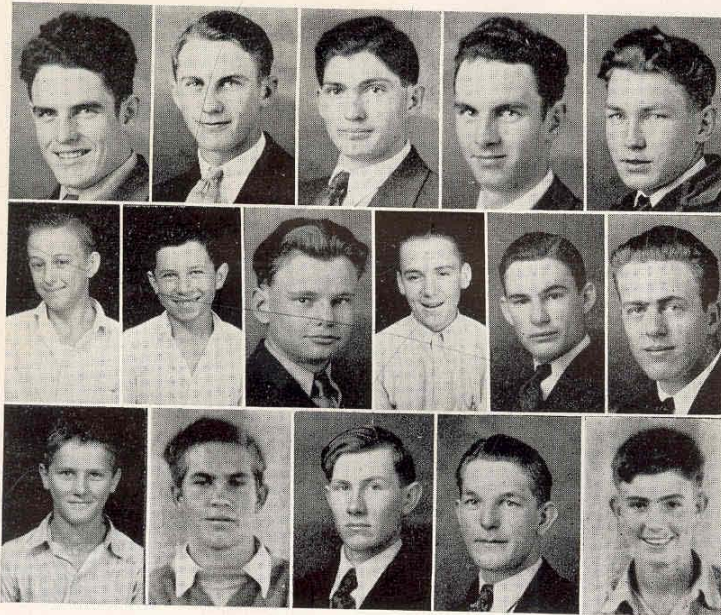
The first Girl's Reserve Club was organized in 1934 with Phyllis Robinson as president and Mrs. Beatrice Mowery, Club Sponsor.

In the school term of 1935, the following officers were elected and resided the first semester: Audra Howser, President; Sylvia Henry, Vice-President; Geraldine Payne, Secretary and Treasurer; and Emily Mills, Chaplain. At the beginning of the second semester new officers were elected, and these were: Eula Allen, President; Dorothy Warner, Vice-President; Veola Miner, Secretary and treasurer; and Nellie Jefferies, Chaplain. Eula Allen dropped school and the Vice-President filled the vacancy.

The ideals of this club are to promote clean and virtuous girlhood; to face life squarely; and for each girl to do her best to honor God, her country, her community; to help other girls and to be in all ways a loyal, true member of the Girl's Reserve.



Hi-Y Club



Third Row—Norman Strange, Billy Atteberry, Burdett Conner, Curtis Strange, Bruce Boyer.
Second—Clay Emry, Noal Calkins, Tommy Parsons, Danny Dismang, Lawrence Quinn, Leonard Hanks.
First Row—Keith Knoch, Max Caldwell, Raymond Graham, Alvin Miner, Kenneth Miller.

The Hi-Y was organized by Mr. D. C. Hickman in 1933 at Bagnell High School, with Cletis Strange as president, and Mr. Hickman, Sponsor.

The officers are elected every semester. Officers presiding the first semester were: President, Bruce Boyer; Vice President, Gerald Conner; and Secretary, Danny Dismang.

Officers presiding the second semester were: President, Norman Strange; Vice President, Billy Atteberry; Secretary, Burdett Conner.

This club has sponsored and supervised many activities of the school. In 1934 it sponsored the school carnival, Fiddler's Contest, and Clean-up week. This year it sponsored the athletic show and other booths during the carnival. It supervised the outside activities achievement day.



Girl's Booster Club



Back Row—Marie Russell, Ruth Beard, Jeanne Williams, Beadrick Stevens, Hazel Pope, Mary Hawkens, Ila Payne, Lily Mae Van Hoosier, Mary Jane Pabor, Edith Robinson, Tressie Tannehill, Miss Anderson, Sponsor.

Front Row—Betty Jo Atteberry, Leatrice Holden, Doris Nelson, Josie Busch, Ollis Giles, Lena Boots, Doris Shrauger, Francis Briggs, Blanche Beard.

The Girls Booster Club was organized under the leadership of Miss Anderson in 1934. It includes the Junior High girls and is an apprentice for the future Girls Reserve Club. Its purpose is to boost Junior High activities and to develop leadership and initiative among the Junior High girls. Miss Anderson, the sponsor, has aided very much in its development as an active organization.



Debate and Speech



Insert—Bruce Boyer, Debate Captain.
Back Row—Billy Atteberry, Thomas Parsons, Gerald Conner, Curtis Strange, Norman Strange, Burdette Conner, Hickman, Coach.
Front Row—Audra Howser, Nellie Jeffries, Jean Evans, Dorothy Warner, Theora Robinson, Bonnie Workman, Alta Cotton.

DRAMATICS

The Dramatic department sponsored plays, debate, oration, and declamation.

At the tri-county meet Nellie Jeffries entered the declamatory contest, Dorothy Warner, the girls oration, and Bruce Boyer, boys oration. Dorothy Warner won second place in the oratorical division.

The debate club has had a very successful year with Mr. D. C. Hickman as coach, and the members of the squad being Bruce Boyer, President, who upheld both the affirmative and negative side; Dorothy Warner, Vice President, upheld the affirmative; Thomas Parsons, negative; Curtis Strange, affirmative, and Jean Evans, negative. There has been fourteen debates this year. The debate squad took the honors in the Tri-County debate tournament by winning first place. Osage sponsored the tournament. We hope that debate will become a permanent club since it has been so successfully started.

There were three one-act plays given this year, "No Sabe", "The Howl of the Wolf" and "Smokescreen". The characters of the three plays were taken chiefly from the speech class.

"No Sabe" was taken to the tri-county league contest. It was a mystery, the villain, a Chinaman by the name of Wo, was portrayed by Thomas Parsons; The chief-of-police was portrayed very vividly by Norman Strange. Audra Howser played the part of Lettie Fairbanks, the daughter of the murdered man, and Billy Atteberry as George Stewart, her lover, and Leonard Starks, the sergeant.

"The Howl of the Wolf" and "Smokescreen" were given for the school assembly and P. T. A. meeting.

"Home Town Girl", an all school cast play, was presented February 28, with the characters, Arthur Jennings, Marian Hastings, Mr. Stone, Mrs. Hastings, Leroy Hastings, Caroline Arms, Sherman O. Swift, Ebenezer Wtaker, Amanda Wtaker, Wash Stubbs and Cynthia Simpson. They were played by Billy Atteberry, Anita Heckerman, Tommy Parsons, Emily Mills, Lawrence Quinn, Audra Howser, Norman Strange, Alvin Miner, Fern Howser, Danny Dismang and Nellie Jeffries, respectively.

"Apple Blossom Time" by Eugene Hafer and directed by Miss Abbott, a delightful comedy in three acts, was presented by the Junior class April 4. Bob Matthews, the hero of the story, Max Caldwell, who assumes the guardianship of Betty Stewart, Silvia Henry. Dorothy Warner portrayed the part of Polly Biddle; Alvin Miner the village constable; Lawrence Quinn, a friend of all, portrayed the part of Charlie Lawrence; Clay Emry as Spud McClaskey and Danny Dismang as Mickey Maquire, furnished loads of laughter with their queer movements and funny bits of humor. Nancy Prescott was portrayed by Emily Mills; Melvina Kurtz by Doris Boots; Loretta Harris by Marjorie Burd. Mrs. Forrest, a haughty woman of forty, trying to obtain the late Tad Forrest's fortune. Flossie Strange, the village old maid, was portrayed by Doris Knoch as Annabel Spriggins.

The Senior play, "Winners All", will be presented May 10, in which all members of the senior class will take a part. It is directed by Mr. Hickman and Miss Anderson.

Post Graduates



ILA ROBINSON

THEORA ROBINSON

VEOLA MINER
Office Secretary

ALTA COTTEN is also a post-graduate.

CLASS OF 1934

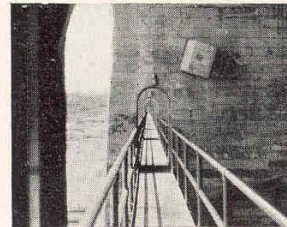
1. JAMES MILES
2. LOIS DEAN CALDWELL
3. GARLAND PAYNE
4. ALTA COTTEN
5. MARION CLAYTON
6. PHYLLIS ROBINSON
7. CANELL THORNSBERRY
8. NORMA SMITH
9. VELMA BOOTS
10. GLEN LUPARDUS
11. BROOKSY BOWLIN
12. THEORA ROBINSON

CLASS OF 1933

1. HAZEL BODENHAMMER
2. HAZEL COTTEN
3. CLETIS STRANGE
4. ROY SWOFFORD
5. LUTHER GIER
6. BLANCHE GRAVES
7. PAUL THOMPSON
8. PAULINE BRANT
9. RUFUS RAMSEY

CLASS OF 1932

1. GEORGE ROBINSON
2. JOHNNIE JONES
3. BERNICE KIDWELL
4. ERMEL STITES
5. OLIVE PAYNE
6. OLIVER PAYNE
7. GAYLORD STRANGE
8. HAROLD COOPER





The above pictures are of two classes in action. The home economic class is supervised by Miss Anderson and consists of eighteen members. The upper picture is the typewriting class. Twenty students take this course. This is one of the commercial courses that is offered, and taught by Miss Owen.



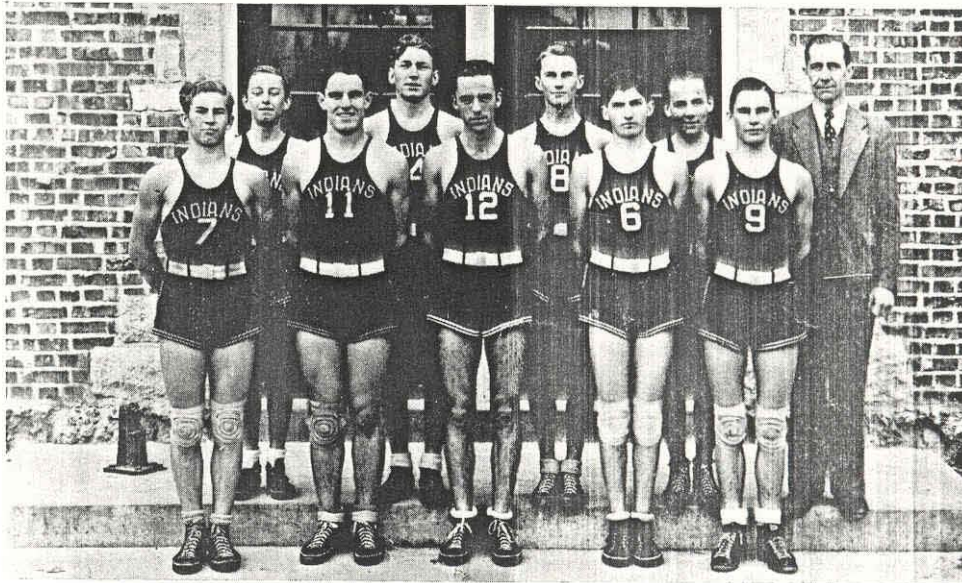


Athletics



Page Twenty-nine

Basketball



Back Row—Clay Emry, Bruce Boyer, Billy Atteberry, Danny Dismang.
Front Row—Max Caldwell, Norman Strange, Gerald Conner, Burdette Conner, Lawrence Quinn, Mr. Henderson, Coach.

In my opinion, the past season, 1934-35, of basketball was a success. There may be other opinions, but mine is based not only on games won and lost but on the experience gained in the fact of still competition, the cooperation shown by the players, the unlimited effort of our coach and the support of the school.

Our conference season ended with 3 games won and 5 lost. The games lost were to Eldon, two games; California two games and Versailles, one game.

This record is not very impressive when regarded as games won or lost, but these games were played with strong teams.

Our non-conference games were 4 wins and 1 loss.

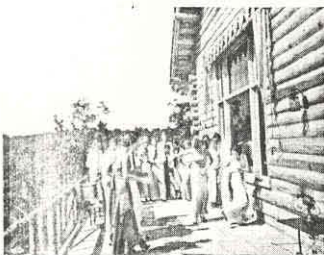
We had great success in the tournaments. Those entered were the Versailles, California, Eldon, Brumley and Lebanon. We received first place honor at Eldon with Strange and Caldwell making the all-star team. We received third place honor at California with Caldwell making the all-star team. In the other tournaments, we received no honors, but had players placed on the all-star team.

Quinn was placed on the all-star team at Versailles and Caldwell and Strange were placed on the all-star team at Lebanon.

On behalf of the squad, I wish to thank the pep club, entire student body and faculty for the pep and enthusiasm shown this year.

In closing, I wish to express my utmost appreciation for being selected as captain of the team.

Captain Burdett Conner.



Girl's Basketball



Audra Howser, Flossie Strange, Marjorie Burd, Doris Knoch, Geraldine Payne, Fern Howser, Faye Brown, Jean Evans, Doral Emry, Sylvia Henry, Doris Boots, Mr. Hickman, Coach.

During the year 1934-35 the girls' basketball team was very successful, winning over half the games played. Several girls came out for the sport. The following girls made the first team:

GERALDINE PAYNE ----- Forward	MARJORIE BURD ----- R. Center
FERN HOWSER ----- Forward	DORIS KNOCH ----- Guard
AUDRA HOWSER ----- Center	FAYE BROWN ----- Guard

Those that made up the team of reserves are as follows:

DORIS BOOTS ----- Forward	DORAL EMRY ----- R. Center
JEAN EVANS ----- Forward	MAGGIE KIDWELL ----- Guard
ERMA KNOCH ----- Center	SYLVIA HENRY ----- Guard

The School of the Osage held a basketball tournament November 3 and 4, winning second place. Fortuna defeated the Osage girls by only one point for first place.

The team entered four tournaments during the season at Camdenton, Jefferson City and Clarksburg. Three trophies and a sportsmanship banner has been won by this team. The teams defeated by Osage are: Tuscumbia—1, Olean—3, Brumley—2, Camdenton—2, Latham—1, and Centertown—1.

At the tournament held at Clarksburg, Flossie Strange, Geraldine Payne, Fern Howser, and Doral Emry were placed on the all star team. Second place honors were won.

At the School of the Osage tournament, Marjorie Burd, Fern Howser, Geraldine Payne, and Flossie Strange were placed on the all-star team. Second place honors were won.

At the Camdenton tournament, Audra Howser and Jean Evans were placed on the all star team. Osage placed Consolation and won the sportsmanship banner.

The team owes much of its success to the coach, Mr. D. C. Hickman and Sponsor, Miss Anderson.

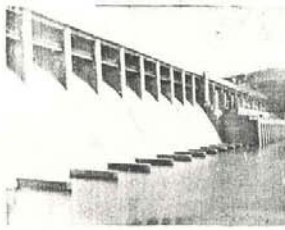


Junior High Basket



Back Row—Francis Mills, Jackie Atteberry, Wayne Percival, Frank Israleson, "Bing" Miller.
Front Row—J. L. Howser, Donald Boyer, Howard Howser, Warren Conner, Mr. Henderson,
Coach.

Many boys have given much of their time toward the development of a Junior High Basketball Team. The season was opened early by Coach Henderson, assisted by Marion Clayton. The team has had a successful season considering this to be the first year of having a Junior High Basketball Team. Three games were won out of five played. The team entered two tournaments—at Brumley and the home tournament. They won consolation at Brumley and placed J. L. Howser, Howard Howser and Jackie Atteberry on the all-star team. The games won were over Versailles, Warren and Ulman. Those lost were to Camdenton twice.



Page Thirty-two



The pep leader, Theora Robinson and the squad were a great asset toward winning the number of basketball games which our boys and girls won. Led by our peppy leader, the walls of O. H. S. rang with hardy attempt to put pep in the teams.

School spirit was carried high in all our games and good sportsmanship was shown to a good advantage at all time.

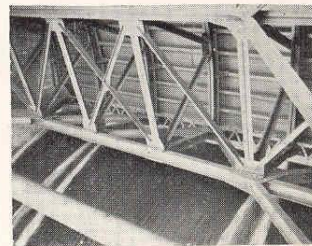
YELLS:

Cling, clang, bang!
We're the Osage gang,
We're the gang that rules the roost
We're the gang that always boost
Osage!

We yell
All yell
Osage!

2. 4. 6. 8
Who do we appreciate
Osage Indians!

O s a g e
O s a g e
That's the way to spell it
Here's the way to yell it
OSAGE!



Track

Our track team last year was a success, and intend for it to be again this year. The Osage Indians won the conference meet last year with 83 points to 32 to our nearest rivals. Strange was high point man of the meet with $17\frac{1}{2}$ points to $16\frac{1}{2}$ to his nearest rival, Baldrige of Linn Creek. Strange placed first in the 100 yard dash, 220 yard dash, and broad jump, also running on the winning relay team.

Clayton was next with 11 points, placing first in the pole vault, discus, and third in the high jump.

Osage won first in every event except the half-mile run, and tied for first in the high jump and the shot put.

The Indians went to the Warrensburg District Meet and Strange qualified for the State Meet at Columbia. The Relay team won second, also qualified for the State Meet.

The track team of this year has been to only one meet—the qualifying meet for the state. Four men were qualified in the 100 yard dash and the shot put, Quinn in the 220 yard dash, Caldwell in the broad jump, and Conner in the discus. The Relay team also qualified for the State meet, consisting of the men mentioned above. (Strange, Conner, Caldwell, and Quinn.)

In speaking for the team, we have done everything that we could to give honors to our school and intend to continue to do so in the future. We owe, in my opinion, all of our success to our coach, Mr. Henderson. He has devoted much of his time to us and we have tried to do as he has asked. We hope that the teams of the School of the Osage in the years to come will have as much or more success than those of the past.

Norman Strange, *Captain*

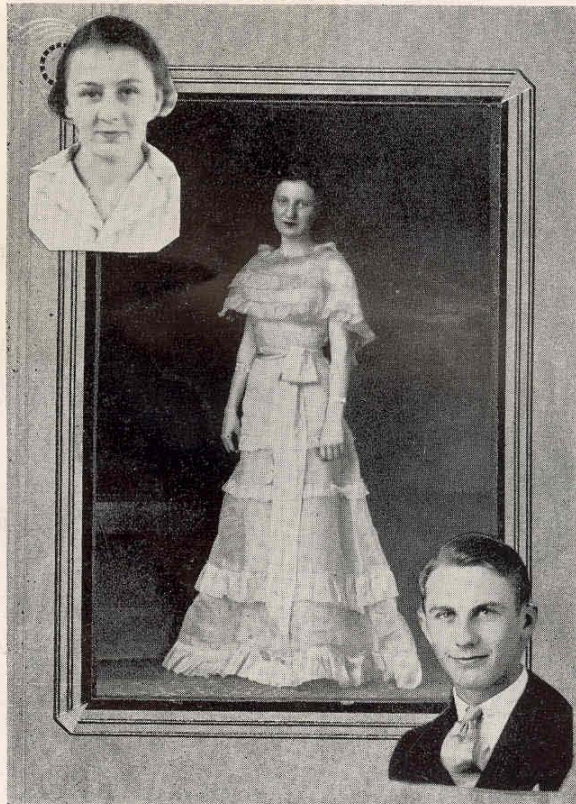




Features



Page Thirty-five

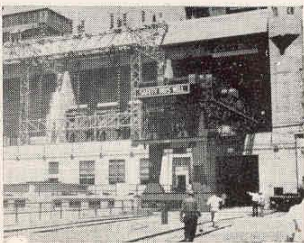


Nellie Jeffries, Queen of the Osage High School.
Audra Howser, Best all-around girl.
Billy Atteberry, Best all-around boy.

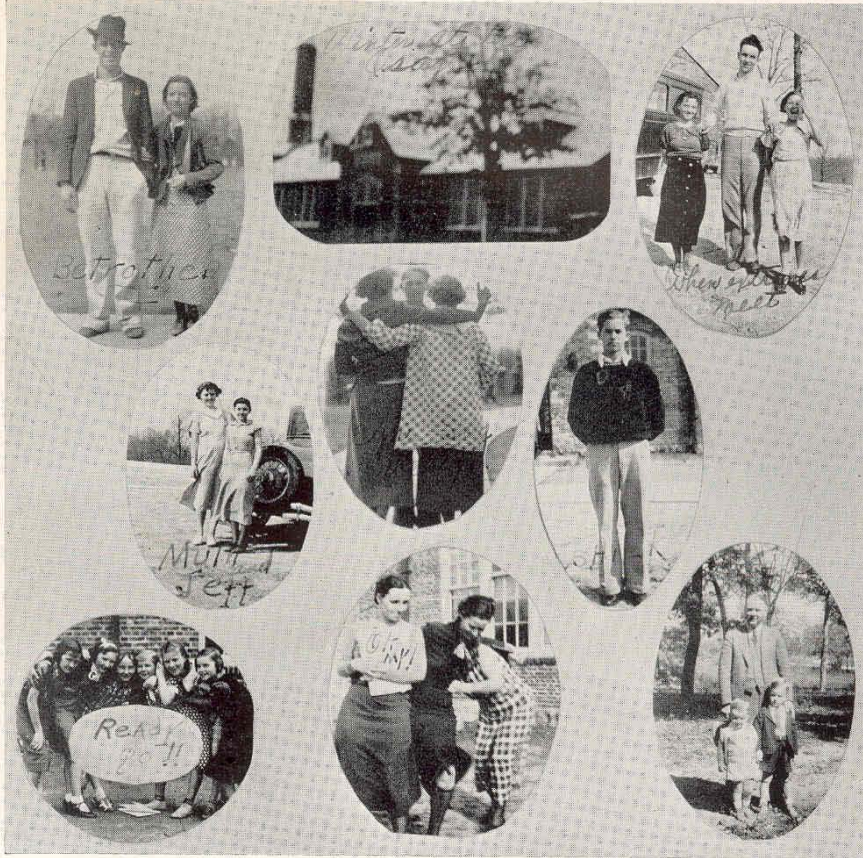
Nellie Jeffries, Dorothy Warner, Erma Lou Knech and Jean Evans were candidate for the most popular girl to reign as Queen of the Osage High School. The final election was April 20. Nellie Jeffries was elected Queen.

The final election of the best all-around girl and boy was by the student body April 22. Candidates were chosen by the faculty members. Scholarship, athletics, activities, leadership, and attitude toward the school and work were considered in choosing the candidates. Candidates were: Girls. Audra Howser, Sylvia Henry and Dorothy Warner. Boys: Billy Atteberry, Alvin Miner, and Norman Strange.

Audra Howser and Billy Atteberry were elected.



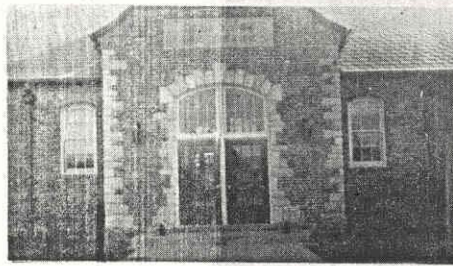
Snapshots



Snapshots



BAGNELL Upper GRADES



THE OPEN DOOR TO KNOWLEDGE.



BAGNELL LOWER GRADES



LIBRARIAN.



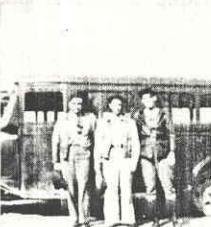
OFFICE FORCE



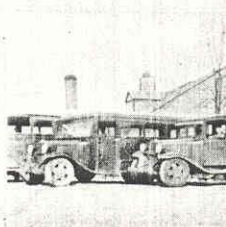
OLD MAIDS



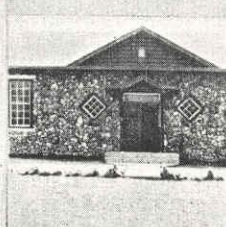
COACH AND WIFE



BUS DRIVERS



SCHOOL BUSES



BOWLIN SCHOOL



-TRACK-

Compliments from Eldon

Eldon Hardware and Lumber Co.,
"Everything in Hardware and Lum-
ber". Reliable Dealers for forty years.
Phone 12—\$5.00.

E. C. Rath, Jeweler. R. I. Time
Service—\$2.00.

Eldon Drug Company. "Every-
thing in Drug Store Mdse."—\$2.00.

Carl T. Buehler Ph. G., Druggist.
"The place to meet your friends".
\$2.00.

Reeds Store. "Everything new to
wear."—\$2.00.

Crum's Cafe—.50.

Mr. Hickman—Do you still sing to the baby when you put him to bed?

Mr. Goodrich—No, not any more, the neighbors say that they would rather hear her cry.

Stanley Brooks Grocery. Good
Prices.—\$1.50.

Atkinson's Variety Store. El-
don's Most Interesting Store.—\$1.

Kroger Grocery. "Everything in
fresh fruits and vegetables at all
times." H. A. Griffith, Mgr.—\$1.00

Noah Payne's Store. Dry Goods,
Groceries, meats. Phone 146.—
\$1.00.

Sanitary Market. Fresh Fruits,
Vegetables. Quality Groceries and
Fresh Meats.—\$1.00.

Eldon's Ozark. "The Best Show
By a Dam Site."—\$1.00.

Lovings Cafe. 20 years faithful
service.—.50.

Benson Brothers Lumber Co.
Building Material and Hardware.
Eldon. Phone 38.—\$1.00.

Miss Owen—My fiance's birthday is next Saturday and I want to give him a surprise. Can you suggest anything?

Miss Anderson—Why not tell him your exact age?

Mrs. Henderson—Is your husband mean?

Mrs. Hickman—Mean? I never heard of anyone meaner. He deliberately turns things in his sleep so I'll awake to hear them, when I'm tired I'm almost pass out.

(handing Danny a \$1.00 bill for a birthday present)—Now
the money Danny, because you remember the old saying, "A
y are soon parted."
anks for parting with it just the same.