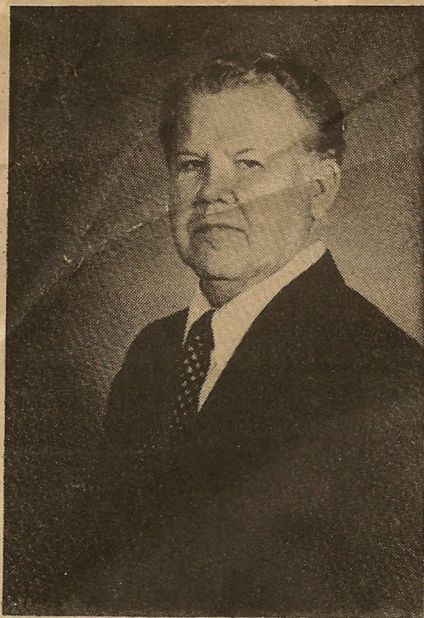


MERCANTILE BANK OF ELDON



GENE R. WAITE
"Director since 1967"

Gene R. Waite is a native of Miller County. He attended school in Iberia and Tuscumbia, and was graduated from the University of Missouri in 1939 with a B.S. degree in Agriculture.

After college, Gene was employed by the U. S. Department of Agriculture for three years as a County Supervisor for the Farm Security Administration. In 1942, he volunteered for service in World War II, and served until the end of the War as a pilot with the Naval Air Force.

In 1944, Waite married the former Christine Backlund of Bloomington, Illinois. They are the parents of two sons, Jeffrey, a Captain in the National Guard, now on active duty in Germany; and Michael, also a Captain in the National Guard and employed by the Citizens Bank of Eldon.

In 1946, Waite began his business career in Eldon with the Central Missouri Turkey Hatchery. He became sole owner of this business in 1960. During the next 20 years, he exerted a major influence on the Turkey Industry in Miller County, producing over two million turkey poults per year and growing from 300,000 to 500,000 turkeys for market, in cooperation with many turkey growers in Miller and adjoining counties. For the past 30 years, he has served as a Director of both the State and National Turkey Organizations. Mr. Waite sold his business in 1980 and retired, but still takes an active interest in his farms in the Eldon area.

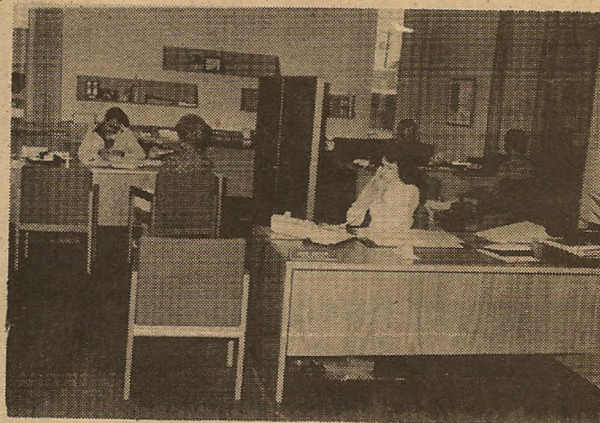
The Mercantile Bank of Eldon is authorized to offer full Trust powers. This department is headed by R. C. Evans with Larry LaDuke as his assistant. While the Eldon Bank handles most of the Trusts and Wills locally they have first call on the Mercantile Trust Company for advice or help. The Trust Company in St. Louis has over 3 billion dollars in assets to supervise and handle with experts in every field.

Under todays tax laws a trust is helpful for most everyone regardless of the size of the estate.

A confidential meeting can be arranged on request to discuss fees and individual estate problems.

Please remember the Mercantile Bank also has safety deposit boxes available at the Main Bank and the Lake Facility. It pays to keep your valuables in safe keeping.

This is the sixth article on our Directors.



MERCANTILE BANK OF ELDON

We're with you